

APH: **576.4** CDL: **9.005**

GPH: **651.9** CertNo:

BOAT

Class **HANSE 385**
Designer **JUDEL/VROLIJK**
Builder **HANSE YACHTS**
Age date **02/2013**
Series date **01/2011**
Offset file **HANSE385.off**
Data file **PER385**

HULL

Length Overall **10.941 m**
Maximum Beam **3.908 m**
Draft **2.013 m**
Displacement **7,681 kg**
DLR **6.5753**
IMS Division **Cruiser/Racer**
Dynamic Allowance **0.334%**
Age Allowance **0.357%**

PROPELLER

Installation **Strut**
Type **Folding 3 blades**
Diameter **0.430m**

CREW

Maximum weight **600 kg**
Minimum weight **450 kg** * when applied
Non Manual Power **No**
Crew Arm Extension

SAIL AREAS (m²)

	Measured	Rated
Mainsail	39.95	40.51
Headsail Luffed	30.09	30.09
Headsail Flying		
Symmetric		
Asymmetric	92.26	92.26

(All asymmetric spinnakers with SHW/SFL > 85%)

STORM SAIL AREAS (m²)

Trysail **12.50**
Storm Jib **10.81**
Heavy Weather Jib **29.18**

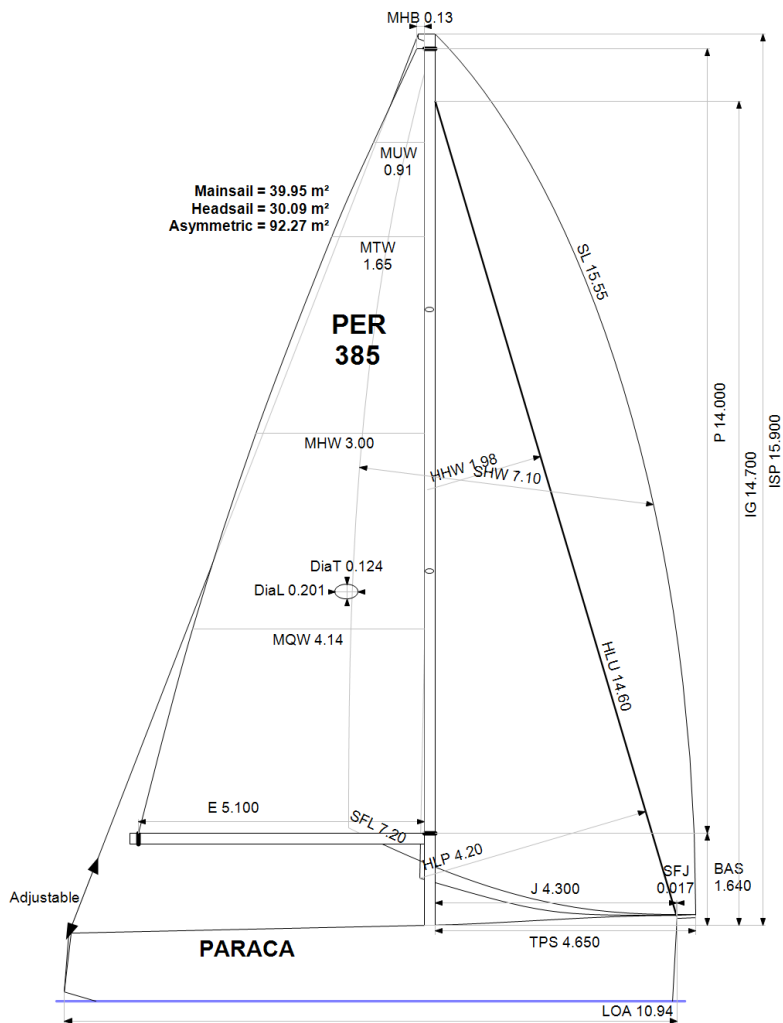
SAIL LIMITS

Headsails **5**
Spinnakers **4**

STABILITY

Righting Moment **197.5 kg·m**
Stability Index **N/A**

The owner and any other person in charge is responsible that boat is complying with her certificate in accordance with RRS 78.1 and ORC Rule 304.



Rated boat velocities in knots

Wind Velocity	6 kt	8 kt	10 kt	12 kt	14 kt	16 kt	20 kt
Beat Angles	45.1°	43.0°	42.4°	41.8°	40.8°	40.5°	40.6°
Beat VMG	3.02	3.71	4.24	4.69	4.99	5.10	5.11
52°	4.73	5.67	6.41	6.96	7.26	7.39	7.44
60°	5.05	6.00	6.74	7.20	7.46	7.61	7.70
75°	5.29	6.27	6.98	7.38	7.63	7.84	8.11
90°	5.49	6.61	7.34	7.71	7.89	8.02	8.42
110°	5.52	6.71	7.41	7.81	8.18	8.56	9.02
120°	5.34	6.51	7.31	7.73	8.11	8.54	9.39
135°	4.81	5.95	6.90	7.46	7.84	8.22	9.06
150°	4.08	5.17	6.08	6.82	7.29	7.60	8.15
Run VMG	3.53	4.48	5.27	5.91	6.31	6.82	7.60
Gybe Angles	144.8°	147.5°	147.5°	148.0°	150.5°	171.8°	177.2°



Time Allowances in secs/NM

Wind Velocity	6 kt	8 kt	10 kt	12 kt	14 kt	16 kt	20 kt
Beat VMG	1192.6	970.3	849.3	767.2	720.8	705.5	704.6
52°	761.8	634.8	561.6	517.2	495.8	486.9	483.6
60°	712.3	600.1	534.5	500.3	482.5	472.9	467.8
75°	680.0	574.4	515.9	488.1	471.7	459.2	443.8
90°	656.1	544.3	490.3	467.1	456.2	449.1	427.7
110°	651.8	536.8	485.6	460.8	439.8	420.5	399.2
120°	673.9	552.8	492.8	465.5	443.6	421.8	383.4
135°	749.0	605.3	522.0	482.4	459.4	438.0	397.4
150°	882.7	696.4	592.1	527.8	494.0	473.6	441.5
Run VMG	1019.2	804.1	683.7	609.5	570.4	528.2	473.5
Selected Courses							
Windward / Leeward	1105.9	887.2	766.5	688.3	645.6	616.9	589.0
All purpose	843.3	686.5	601.6	551.9	524.2	506.0	485.4

Single Number Scoring Options

Course	Time On Distance	Time On Time
Windward / Leeward	724.1	0.8286
All purpose	576.4	1.0409