

APH: **557.5** CDL: **9.179**

GPH: **624.7**

CertNo: **PERI05**

BOAT

Class **First 36.7**
Designer **Farr**
Builder **Beneteau**
Age date **01/2001**
Series date **01/2001**
Offset file **FIRST367.off**
Data file **PER612**

HULL

Length Overall **10.640 m**
Maximum Beam **3.458 m**
Draft **2.220 m**
Displacement **5,527 kg**
DLR **6.4239**
IMS Division **Cruiser/Racer**
Dynamic Allowance **0.014%**
Age Allowance **0.487%**

PROPELLER

Installation **Strut**
Type **Folding 2 blades**
Diameter **0.410m**

CREW

Maximum weight **675 kg**
Minimum weight **506 kg** * when applied
Non Manual Power **No**
Crew Arm Extension

SAIL AREAS (m²)

	Measured	Rated
Mainsail	39.22	39.99
Headsail Luffed	38.49	38.49
Headsail Flying		
Symmetric	85.31	85.31
Asymmetric		

STORM SAIL AREAS (m²)

Trysail **11.52**
Storm Jib **10.10**
Heavy Weather Jib **27.26**

SAIL LIMITS

Headsails **5**
Spinnakers **4**

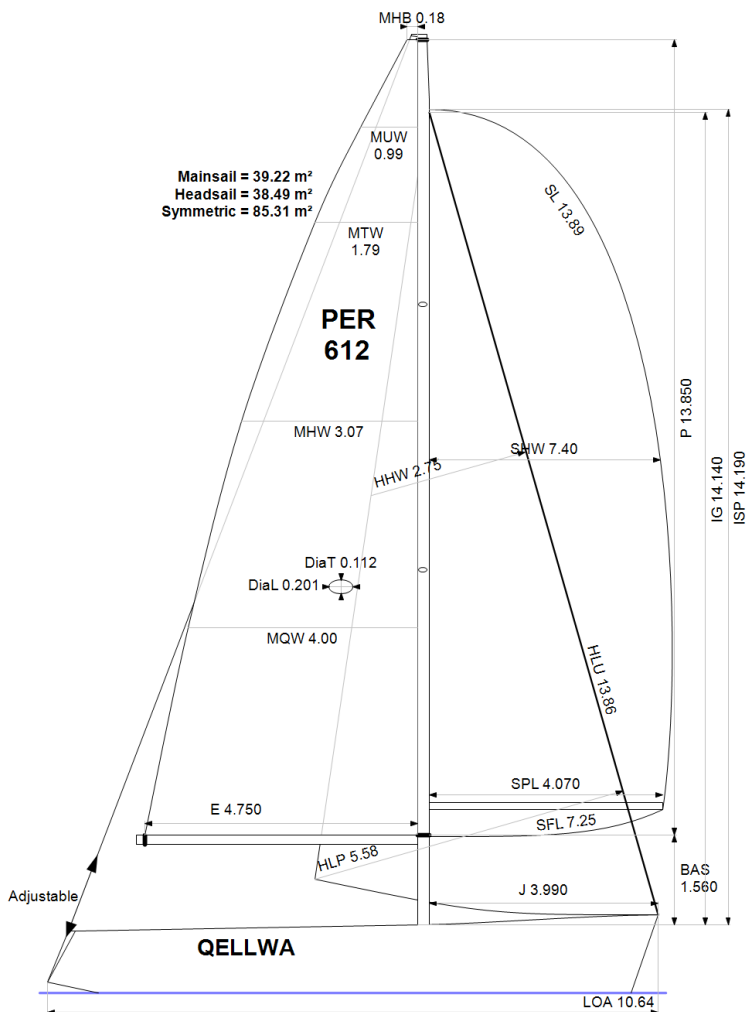
STABILITY

Righting Moment **122.2 kg·m**
Stability Index **109.6**

COMMENTS

CAMBIO ARCHIVO DE ARMADOR ex LUCIA

The owner and any other person in charge is responsible that boat is complying with her certificate in accordance with RRS 78.1 and ORC Rule 304.



Rated boat velocities in knots

Wind Velocity	6 kt	8 kt	10 kt	12 kt	14 kt	16 kt	20 kt
Beat Angles	42.4°	41.2°	40.0°	38.4°	37.8°	38.1°	38.1°
Beat VMG	3.52	4.24	4.80	5.06	5.16	5.21	5.26
52°	5.34	6.31	6.90	7.13	7.21	7.26	7.30
60°	5.62	6.57	7.07	7.30	7.39	7.45	7.48
75°	5.85	6.75	7.18	7.45	7.65	7.76	7.86
90°	5.77	6.73	7.23	7.50	7.77	8.03	8.34
110°	5.60	6.75	7.32	7.70	8.07	8.30	8.67
120°	5.43	6.59	7.23	7.63	8.04	8.46	9.05
135°	4.90	6.02	6.89	7.36	7.74	8.16	9.06
150°	4.14	5.22	6.18	6.93	7.36	7.72	8.52
Run VMG	3.58	4.52	5.36	6.10	6.72	7.20	7.90
Gybe Angles	144.8°	150.2°	152.0°	157.7°	170.0°	178.1°	179.0°



International
Certificate
2022

Boat
QELLWA
PER 612

Asociacion de Vela Oceanica
del Peru - AVOP
Roberto Peschiera - Rating Officer
peschiera56@gmail.com



Time Allowances in secs/NM

Wind Velocity	6 kt	8 kt	10 kt	12 kt	14 kt	16 kt	20 kt
Beat VMG	1023.1	849.7	750.7	712.1	697.6	691.0	683.8
52°	674.8	570.3	521.6	504.8	499.0	496.1	492.9
60°	640.3	548.0	509.5	493.3	486.9	483.5	481.0
75°	615.3	533.7	501.3	483.1	470.6	463.9	458.1
90°	623.4	534.7	497.6	480.0	463.3	448.5	431.6
110°	642.7	533.6	491.9	467.3	446.3	433.5	415.4
120°	663.2	546.3	497.8	471.6	447.8	425.7	397.7
135°	735.0	598.1	522.9	489.4	465.3	441.3	397.3
150°	870.4	689.3	582.7	519.7	489.0	466.3	422.5
Run VMG	1005.1	795.8	671.9	590.0	535.9	500.1	455.8
Selected Courses							
Windward / Leeward	1014.1	822.7	711.3	651.0	616.8	595.5	569.8
All purpose	781.1	645.0	573.9	538.0	516.8	502.6	482.2

Single Number Scoring Options

Course	Time On Distance	Time On Time
Windward / Leeward	681.9	0.8798
All purpose	557.5	1.0763



Data in meters/kilograms (Metric)

HULL AND APPENDAGES (Lightship Trim)

Class	First 36.7	LOA	10.640	VCGD	0.223
Measurement	16/06/2010	Max. Beam	3.458	VCGM	0.216
HIN		Draft	2.220	RM Measured (kg·m)	122.2
Plan review		Displacement	5,527	RM Default (kg·m)	139.1
Hull construction	Solid	Wetted area	25.04	Limit of positive stability(°)	107.9
Aramid Hull Core	No	IMS L	9.563	Stability Index	109.6
Carbon Rudder	Yes	LSM0	9.510		
Light stanchions	No	Acc. length	10.640		
Trim tab	No	Sink (kg/mm)	19.15		

PROPELLER

Propeller Type	Folding 2 blades				
Installation	Strut	PRD	0.410	EDL	2.500
Twin screw	No	PBW	0.112	ST1	0.045
Hydro generator	No	PIPA	0.0029	ST2	0.170
				ST3	0.170
				ST4	0.095
				ST5	0.255

RIG

Forestay tension	Aft	P	13.850	E	4.750
Inner stay	None Fitted	IG	14.140	J	3.990
Carbon mast	No	ISP	14.190	BAS	1.560
Headsail furler	No	MDT1	0.112	FSD	0.029
Mainsail furler	No	MDL1	0.201	SFJ	0.000
Articulated bowsprit	No	MDT2	0.104	SPL	4.070
Non-circular rigging	No	MDL2	0.170	WPL	
Fiber rigging	No	TL	1.070	TPS	
Runners/Checkstays	0	MW	0.201	BD	0.160
Spreaders	2	GO	0.220	MWT	
				MCG	

FLOTATION AND STABILITY

Calculation method	Poles inclining	SFFP	0.367	SAFP	10.162	W1	80.0	PD1	569.7	WD	11.080
Flotation Date	15/06/2017	FFM	1.350	FAM	1.056	W2	80.0	PD2	576.1	PLM	9000.00
Measurer		FF	1.345	FA	1.065	W3	80.0	PD3	571.1	GSA	1.0
Comment		LCFcl	5.876	LCFsh	6.109	W4	80.0	PD4	568.9	RSA	1.0
		SG	1.0253	HBI	1.190						

INVENTORY

TANKS	<i>Id</i>	<i>Description</i>	<i>Sp.Wght</i>	<i>Capacity</i>	<i>Condition</i>	<i>LCG</i>	<i>VCG</i>
	C11	AGUA PVC RIGIDO		15	0	1.57	
	C3	PETROLEO	0.9000	80	0	8.32	
	E6	AGUA PVC RIGIDO		80	0	4.99	
	B6	AGUA PVC RIGIDO		80	0	4.99	
				Total deductible	54	8.32	
OTHER ITEMS	<i>Id</i>	<i>Kind</i>	<i>Description</i>	<i>Weight</i>	<i>LCG</i>	<i>VCG</i>	
	B2	Miscellaneous	BOTELLA DE GAS	3	9.55		
	C4	Battery	01 bateria de 13 placas	14	6.79		
	C4	Battery	01 bateria de 11 placas	14	6.79		
	C4	Engine	VOLVO PENTA 29HP				
				Total deductible	0		



MAINSAIL

<i>Id</i>	<i>MHB</i>	<i>MUW</i>	<i>MTW</i>	<i>MHW</i>	<i>MQW</i>	<i>Area</i>	<i>Meas.Date</i>	<i>Maker</i>	<i>Material</i>	<i>Comment</i>
MAY1	0.18	0.99	1.79	3.07	4.00	39.22	14/06/2010	North	Kevlar	

HEADSAIL

<i>Id</i>	<i>HHB</i>	<i>HUW</i>	<i>HTW</i>	<i>HHW</i>	<i>HQW</i>	<i>HLP</i>	<i>HLU</i>	<i>Btn</i>	<i>Flying</i>	<i>FT</i>	<i>Area</i>	<i>Meas.Date</i>	<i>Maker</i>	<i>Material</i>	<i>Comment</i>
G1	0.08	0.72	1.39	2.75	4.14	5.58	13.86	No	No		38.49	14/06/2010	North	Kevlar	

SYMMETRIC SPINNAKER

<i>Id</i>	<i>SLU</i>	<i>SLE</i>	<i>SL</i>	<i>SHW</i>	<i>SFL</i>	<i>Area</i>	<i>Meas.Date</i>	<i>Maker</i>	<i>Material</i>	<i>Comment</i>
S075	13.89	13.89	13.89	7.40	7.25	85.31	14/06/2010	North	Dacron	