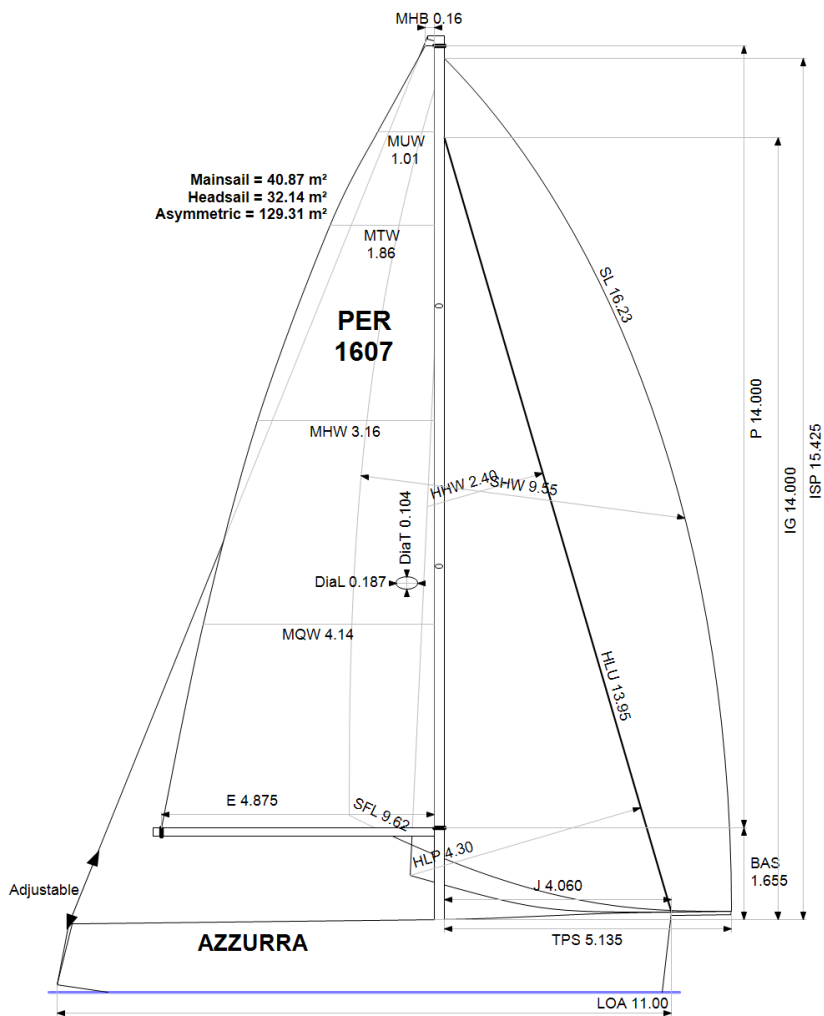


APH ToD: **536.9** CDL: **9.678**

APH ToT: **1.1175** CertNo:



**Rated boat velocities in knots**

Wind Velocity	6 kt	8 kt	10 kt	12 kt	14 kt	16 kt	20 kt	24 kt
Beat Angles	43.1°	41.2°	39.7°	38.5°	37.9°	38.1°	38.2°	39.3°
Beat VMG	3.55	4.33	4.88	5.17	5.30	5.38	5.44	5.38
52°	5.43	6.42	7.03	7.33	7.47	7.54	7.63	7.63
60°	5.72	6.67	7.22	7.51	7.67	7.76	7.87	7.88
75°	5.92	6.84	7.35	7.68	7.92	8.09	8.29	8.39
90°	5.89	6.96	7.49	7.71	8.00	8.27	8.68	8.94
110°	6.02	7.14	7.73	8.14	8.44	8.68	9.11	9.51
120°	5.89	7.04	7.67	8.16	8.61	9.04	9.67	10.31
135°	5.24	6.54	7.37	7.88	8.36	8.86	10.15	12.25
150°	4.43	5.60	6.62	7.31	7.69	8.02	8.71	10.58
Run VMG	3.84	4.85	5.73	6.33	6.66	7.13	7.90	9.16
Gybe Angles	143.5°	147.5°	148.1°	150.1°	150.5°	173.0°	175.7°	139.6°

**BOAT**

Class **DUFOUR 36P**  
Designer **UMBERTO FELCI**  
Builder **DUFOUR YACHTS**  
Age date **03/2013**  
Series date **12/2012**  
Offset file **duf36E-n.off**  
Data file **PER1607**

**HULL**

Length Overall **10.996 m**  
Maximum Beam **3.624 m**  
Draft **2.176 m**  
Displacement **5,969 kg**  
DLR **6.1798**  
IMS Division **Cruiser/Racer**  
Dynamic Allowance **0.180%**  
Age Allowance **0.390%**

**PROPELLER**

Installation **Strut**  
Type **Folding 2 blades**  
Diameter **0.460m**

**CREW**

Maximum weight **670 kg** (declared)  
Minimum weight **540 kg** \*when applied  
Non Manual Power **No**  
Crew Arm Extension

**SAIL AREAS (m²)**

	Measured	Rated
Mainsail	<b>40.87</b>	<b>41.72</b>
Headsail Luffed	<b>32.14</b>	<b>32.14</b>
Headsail Flying		
Symmetric		
Asymmetric	<b>129.31</b>	<b>129.31</b>

(All asymmetric spinnakers with SHW/SFL > 85%)

**STORM SAIL AREAS (m²)**

Trysail **11.95**  
Storm Jib **9.88**  
Heavy Weather Jib **26.67**

**SAIL LIMITS**

Headsails **6**  
Spinnakers **5**

**STABILITY**

Righting Moment **150.2 kg·m**  
Stability Index **125.9**

The owner and any other person in charge is responsible that boat is complying with her certificate in accordance with RRS 78.1 and ORC Rule 304.



International  
Certificate  
2024

Boat  
**AZZURRA**  
PER 1607

Asociacion de Vela Oceánica  
del Peru - AVOP  
Roberto Peschiera - RO  
Peschiera56@gmail.com



Time Allowances in secs/NM								
Wind Velocity	6 kt	8 kt	10 kt	12 kt	14 kt	16 kt	20 kt	24 kt
Beat VMG	1014.4	831.3	737.6	696.0	679.0	669.6	661.7	669.4
52°	663.5	560.7	512.0	491.0	482.2	477.4	471.9	472.1
60°	629.4	539.8	498.8	479.2	469.2	464.1	457.4	457.1
75°	608.0	526.6	489.8	468.9	454.7	445.1	434.3	429.1
90°	611.6	516.9	481.0	467.1	450.3	435.4	414.8	402.7
110°	597.8	504.2	465.9	442.2	426.3	414.7	395.1	378.5
120°	611.7	511.3	469.2	441.4	418.0	398.4	372.3	349.1
135°	687.4	550.7	488.6	457.0	430.6	406.2	354.7	293.8
150°	812.1	642.5	544.2	492.4	468.1	449.1	413.2	340.4
Run VMG	937.7	741.9	628.4	568.6	540.3	505.0	455.9	393.0
Selected Courses								
Windward / Leeward	976.0	786.6	683.0	632.3	609.7	587.3	558.8	531.2
All purpose	751.6	618.0	551.5	518.5	500.2	485.0	463.0	440.9

Single Number Scoring Options		
Course	Time On Distance	Time On Time
Windward / Leeward	662.3	0.9059
All purpose	536.9	1.1175



Data in meters/kilograms (Metric)

**HULL AND APPENDAGES (Lightship Trim)**

Class	<b>DUFOUR 36P</b>	LOA	<b>10.996</b>	VCGD	<b>-0.042</b>
Measurement	<b>12/03/2014</b>	Max. Beam	<b>3.624</b>	VCGM	<b>-0.015</b>
HIN		Draft	<b>2.176</b>	RM Rated (kg-m)	<b>150.2</b>
Plan review		Displacement	<b>5,969</b>	Limit of positive stability(°)	<b>124.5</b>
Hull construction	<b>Solid</b>	Wetted area	<b>27.16</b>	Stability Index	<b>125.9</b>
Carbon Rudder	<b>No</b>	IMS L	<b>10.150</b>	Default crew weight	<b>677</b>
Light stanchions	<b>No</b>	LSM0	<b>9.884</b>	Declared crew weight	<b>670</b>
Trim tab	<b>No</b>	Acc. length	<b>10.996</b>		
		Sink (kg/mm)	<b>20.56</b>		

**PROPELLER**

Propeller Type	<b>Folding 2 blades</b>						
Installation	<b>Strut</b>	PRD	<b>0.460</b>	EDL	<b>2.957</b>	ST3	<b>0.180</b>
Twin screw	<b>No</b>	PBW	<b>0.130</b>	ST1	<b>0.065</b>	ST4	<b>0.111</b>
Hydro generator	<b>No</b>	PIPA	<b>0.0038</b>	ST2	<b>0.179</b>	ST5	<b>0.300</b>

**RIG**

Forestay tension	<b>Aft</b>	P	<b>14.000</b>	E	<b>4.875</b>
Inner stay	<b>None Fitted</b>	IG	<b>14.000</b>	J	<b>4.060</b>
Mast material		ISP	<b>15.425</b>	BAS	<b>1.655</b>
Single headsail furler	<b>No</b>	MDT1	<b>0.104</b>	FSD	<b>0.330</b>
Mainsail furler		MDL1	<b>0.187</b>	SFJ	
Articulated bowsprit	<b>No</b>	MDT2	<b>0.104</b>	SPL	<b>0.000</b>
Non-circular rigging	<b>No</b>	MDL2	<b>0.187</b>	WPL	
Fiber rigging	<b>No</b>	TL		TPS	<b>5.135</b>
Adjustable mast foot	<b>No</b>	MW	<b>0.187</b>	BD	<b>0.160</b>
Runners/Checkstays	<b>0</b>	GO	<b>0.203</b>	MWT	
Spreaders	<b>2</b>			MCG	
Rotating mast	<b>No</b>				

**FLOTATION AND STABILITY**

Calculation method	<b>Poles inclining</b>	SFFP	<b>0.273</b>	SAFP	<b>10.725</b>	W1	<b>90.0</b>	PD1	<b>521.1</b>	WD	<b>11.270</b>
Flotation Date	<b>13/06/2017</b>	FFM	<b>1.429</b>	FAM	<b>1.215</b>	W2	<b>90.0</b>	PD2	<b>533.3</b>	PLM	<b>9000.00</b>
Comment	<b>puertas y colchonetas retiradas</b>	FF	<b>1.427</b>	FA	<b>1.218</b>	W3	<b>90.0</b>	PD3	<b>550.2</b>	GSA	<b>1.0</b>
		LCFcl	<b>5.958</b>	LCFsh	<b>6.203</b>	W4	<b>90.0</b>	PD4	<b>527.7</b>	RSA	<b>1.0</b>
		SG	<b>1.0253</b>	HBI	<b>1.294</b>					RM	<b>149.9</b>

**INVENTORY**

<b>TANKS</b>		<i>Id</i>	<i>Description</i>	<i>Sp.Wght</i>	<i>Capacity</i>	<i>Condition</i>	<i>LCG</i>	<i>VCG</i>	
	E9		FUEL PVC AFT ON STARBOARD	0.9000	90	<del>46</del>	8.95	0.15	
	B6		WATER PVC ON STARBOARD		100	0	5.11	0.25	
	B6		WATER PVC ON PORT		100	0	5.11	0.25	
						<i>Total deductible</i>	<b>14</b>	<b>8.95</b>	<b>0.15</b>
<b>OTHER ITEMS</b>		<i>Id</i>	<i>Kind</i>	<i>Description</i>	<i>Weight</i>	<i>LCG</i>	<i>VCG</i>		
	B2		Miscellaneous	botella de gas	1	10.31			
	C3		Battery	1 bateria de 12 celdas	14	8.86	0.03		
	C3		Battery	1 bateria de 12 celdas	14	8.86	0.15		
	C4		Battery	1 bateria de 12 celdas	14	7.16	0.03		
	C5		Engine	VOLVO PENTA 30HP					
						<i>Total deductible</i>	<b>0</b>		



#### MAINSAIL

<i><b>Id</b></i>	<i><b>MHB</b></i>	<i><b>MUW</b></i>	<i><b>MTW</b></i>	<i><b>MHW</b></i>	<i><b>MQW</b></i>	<i><b>Area</b></i>	<i><b>Meas.Date</b></i>	<i><b>Comment</b></i>
M-3	0.16	1.01	1.86	3.16	4.14	40.87	05/04/2024	remedicion

#### HEADSAIL

<i><b>Id</b></i>	<i><b>HHB</b></i>	<i><b>HUW</b></i>	<i><b>HTW</b></i>	<i><b>HHW</b></i>	<i><b>HQW</b></i>	<i><b>HLP</b></i>	<i><b>HLU</b></i>	<i><b>Btn</b></i>	<i><b>Flying FT</b></i>	<i><b>Area</b></i>	<i><b>Meas.Date</b></i>	<i><b>Comment</b></i>
JLM1	0.10	0.67	1.30	2.40	3.40	4.30	13.95	Yes	No	32.14	05/04/2024	remedicion
C1	0.09	0.61	1.14	2.21	3.28	4.29	14.10	Yes	No	31.00	13/04/2016	remedicion
C4	0.06	0.08	0.51	1.48	2.51	3.66	14.09	Yes	No	22.42	12/03/2014	remedicion

#### ASYMMETRIC SPINNAKER

<i><b>Id</b></i>	<i><b>SLU</b></i>	<i><b>SLE</b></i>	<i><b>SL</b></i>	<i><b>SHW</b></i>	<i><b>SFL</b></i>	<i><b>Ratio</b></i>	<i><b>Area</b></i>	<i><b>Meas.Date</b></i>	<i><b>Comment</b></i>
A2-2	17.26	15.19	16.23	9.55	9.62	99%	129.31	05/04/2024	azul remedicion
A1	16.90	14.85	15.88	9.55	9.44	101%	126.05	19/12/2022	blanco
A2	16.90	14.82	15.86	8.93	9.00	99%	118.21	06/04/2016	remedición
A3	16.68	14.93	15.81	8.12	9.09	89%	109.50	12/03/2014	remedición

#### CRUISER/RACER REQUIREMENTS\*

Accommodation length	<b>11.0 m</b>	Table area	<b>0.55 m<sup>2</sup></b>	Headroom	<b>1.76 m</b>
Minimum number of berths	<b>5</b>	Personal gear stowage	<b>0.20 m<sup>3</sup></b>	Fresh water capacity	<b>125 l</b>
Minimum number of seats in cockpit	<b>4</b>	Food stowage	<b>0.30 m<sup>3</sup></b>	Fuel capacity	<b>70 l</b>

\* This list refers to the calculated requirements. See IMS Appendix 1 for the complete list of requirements.