

APH: **539.6** CDL: **9.531**

GPH: **605.2** CertNo:

BOAT

Class **DUFOUR 36P**
Designer **UMBERTO FELCI**
Builder **DUFOUR YACHTS**
Age date **03/2013**
Series date **12/2012**
Offset file **duf36E-n.off**
Data file **PER1607**

HULL

Length Overall **10.996 m**
Maximum Beam **3.624 m**
Draft **2.176 m**
Displacement **5,969 kg**
DLR **5.9012**
IMS Division **Cruiser/Racer**
Dynamic Allowance **0.145%**
Age Allowance **0.325%**

PROPELLER

Installation **Strut**
Type **Folding 2 blades**
Diameter **0.460m**

CREW

Maximum weight **650 kg**
Minimum weight **488 kg** * when applied
Non Manual Power **No**
Crew Arm Extension

SAIL AREAS (m²)

	Measured	Rated
Mainsail	41.09	41.96
Headsail Luffed	32.83	32.83
Headsail Flying		

Symmetric
Asymmetric **130.06** **130.06**
(All asymmetric spinnakers with SHW/SFL > 85%)

STORM SAIL AREAS (m²)

Trysail **11.95**
Storm Jib **9.88**
Heavy Weather Jib **26.67**

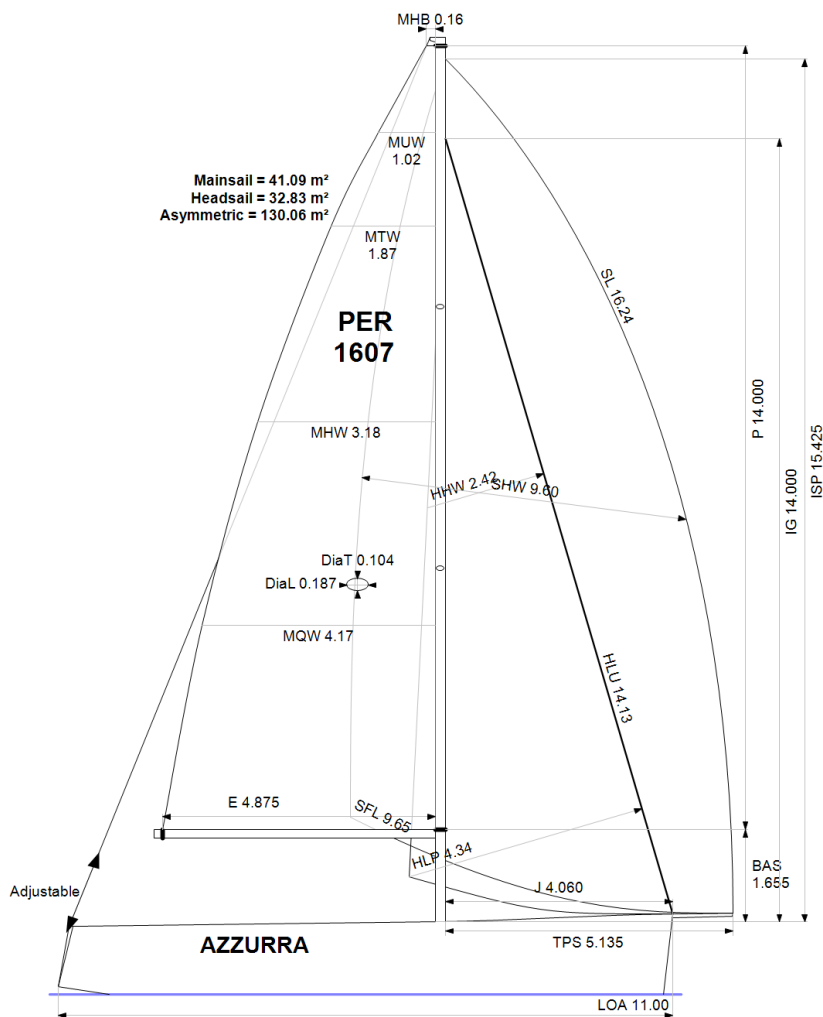
SAIL LIMITS

Headsails **5**
Spinnakers **4**

STABILITY

Righting Moment **149.9 kg·m**
Stability Index **126.5**

The owner and any other person in charge is responsible that boat is complying with her certificate in accordance with RRS 78.1 and ORC Rule 304.



Rated boat velocities in knots

Wind Velocity	6 kt	8 kt	10 kt	12 kt	14 kt	16 kt	20 kt
Beat Angles	43.5°	41.8°	41.1°	39.6°	39.0°	39.0°	38.8°
Beat VMG	3.43	4.18	4.77	5.10	5.23	5.29	5.40
52°	5.28	6.30	7.00	7.31	7.43	7.49	7.57
60°	5.60	6.61	7.21	7.50	7.64	7.71	7.77
75°	5.86	6.84	7.36	7.66	7.90	8.07	8.21
90°	5.89	7.04	7.52	7.71	8.00	8.30	8.77
110°	6.02	7.19	7.74	8.16	8.45	8.71	9.17
120°	5.89	7.09	7.68	8.17	8.69	9.09	9.72
135°	5.25	6.57	7.40	7.88	8.38	8.93	10.33
150°	4.46	5.61	6.66	7.35	7.70	8.02	8.77
Run VMG	3.86	4.86	5.77	6.37	6.68	7.16	7.89
Gybe Angles	144.2°	147.8°	147.8°	150.5°	151.9°	173.0°	175.7°



International
Certificate
2022

Boat
AZZURRA
PER 1607

Asociacion de Vela Oceanica
del Peru - AVOP
Roberto Peschiera - Rating Officer
peschiera56@gmail.com



Time Allowances in secs/NM

Wind Velocity	6 kt	8 kt	10 kt	12 kt	14 kt	16 kt	20 kt
Beat VMG	1048.3	860.5	754.8	706.4	688.6	680.9	666.1
52°	682.0	571.2	514.4	492.2	484.5	480.8	475.6
60°	642.7	544.3	499.5	480.2	471.2	467.1	463.6
75°	613.9	526.2	489.4	469.8	455.7	446.1	438.3
90°	610.9	511.2	478.6	466.7	449.9	433.6	410.7
110°	598.1	501.0	465.0	441.0	426.2	413.4	392.7
120°	611.4	508.0	468.6	440.7	414.4	396.0	370.5
135°	686.0	547.7	486.4	457.1	429.6	403.3	348.6
150°	807.1	642.1	540.8	489.6	467.4	449.0	410.5
Run VMG	931.9	741.4	624.4	565.0	538.9	502.6	456.2
Selected Courses							
Windward / Leeward	990.1	801.0	689.6	635.7	613.8	591.8	561.2
All purpose	760.4	624.1	554.1	520.2	502.1	487.0	463.3

Single Number Scoring Options

Course	Time On Distance	Time On Time
Windward / Leeward	668.2	0.8979
All purpose	539.6	1.1119



Data in meters/kilograms (Metric)

HULL AND APPENDAGES (Lightship Trim)

Class	DUFOUR 36P	LOA	10.996	VCGD	-0.042
Measurement	12/03/2014	Max. Beam	3.624	VCGM	-0.015
HIN		Draft	2.176	RM Measured (kg·m)	149.9
Plan review		Displacement	5,969	RM Default (kg·m)	150.1
Hull construction	Solid	Wetted area	27.16	Limit of positive stability(°)	125.1
Aramid Hull Core	No	IMS L	10.123	Stability Index	126.5
Carbon Rudder	No	LSM0	10.037		
Light stanchions	No	Acc. length	10.996		
Trim tab	No	Sink (kg/mm)	20.56		

PROPELLER

Propeller Type	Folding 2 blades						
Installation	Strut	PRD	0.460	EDL	2.957	ST3	0.180
Twin screw	No	PBW	0.130	ST1	0.065	ST4	0.111
Hydro generator	No	PIPA	0.0038	ST2	0.179	ST5	0.300

RIG

Forestay tension	Aft	P	14.000	E	4.875
Inner stay	None Fitted	IG	14.000	J	4.060
Carbon mast	No	ISP	15.425	BAS	1.655
Headsail furler	No	MDT1	0.104	FSD	0.330
Mainsail furler	No	MDL1	0.187	SFJ	
Articulated bowsprit	No	MDT2	0.104	SPL	0.000
Non-circular rigging	No	MDL2	0.187	WPL	
Fiber rigging	No	TL		TPS	5.135
Runners/Checkstays	0	MW	0.187	BD	0.160
Spreaders	2	GO	0.203	MWT	
				MCG	

FLOTATION AND STABILITY

Calculation method	Poles inclining	SFFP	0.273	SAFP	10.725	W1	90.0	PD1	521.1	WD	11.270
Flotation Date	13/06/2017	FFM	1.429	FAM	1.215	W2	90.0	PD2	533.3	PLM	9000.00
Measurer		FF	1.427	FA	1.218	W3	90.0	PD3	550.2	GSA	1.0
Comment	puertas y colchonetas retiradas	LCFcl	5.958	LCFsh	6.203	W4	90.0	PD4	527.7	RSA	1.0
		SG	1.0253	HBI	1.294						

INVENTORY

TANKS	<i>Id</i>	<i>Description</i>	<i>Sp.Wght</i>	<i>Capacity</i>	<i>Condition</i>	<i>LCG</i>	<i>VCG</i>
	E9	FUEL PVC AFT ON STARBOARD	0.9000	90	46	8.95	0.15
	B6	WATER PVC ON STARBOARD		100	0	5.11	0.25
	B6	WATER PVC ON PORT		100	0	5.11	0.25
				<i>Total deductible</i>	14	8.95	0.15
OTHER ITEMS	<i>Id</i>	<i>Kind</i>	<i>Description</i>	<i>Weight</i>	<i>LCG</i>	<i>VCG</i>	
	B2	Miscellaneous	botella de gas	1	10.31		
	C3	Battery	1 bateria de 12 celdas	14	8.86	0.03	
	C3	Battery	1 bateria de 12 celdas	14	8.86	0.15	
	C4	Battery	1 bateria de 12 celdas	14	7.16	0.03	
	C5	Engine	VOLVO PENTA 30HP				
				<i>Total deductible</i>	0		



MAINSAIL

<i>Id</i>	<i>MHB</i>	<i>MUW</i>	<i>MTW</i>	<i>MHW</i>	<i>MQW</i>	<i>Area Meas.Date</i>	<i>Maker</i>	<i>Material</i>	<i>Comment</i>
M-3	0.16	1.02	1.87	3.18	4.17	41.09 05/10/2021	NORTH	Carbon	NUEVA

HEADSAIL

<i>Id</i>	<i>HHB</i>	<i>HUW</i>	<i>HTW</i>	<i>HHW</i>	<i>HQW</i>	<i>HLP</i>	<i>HLU</i>	<i>Btn</i>	<i>Flying</i>	<i>FT</i>	<i>Area Meas.Date</i>	<i>Maker</i>	<i>Material</i>	<i>Comment</i>
JLM1	0.10	0.69	1.31	2.42	3.42	4.34	14.13	Yes	No		32.83 22/10/2020	NORTH	Carbon	NUEVA
C1	0.09	0.61	1.14	2.21	3.28	4.29	14.10	Yes	No		31.00 13/04/2016	QUANTUM	Kevlar	remedicion
C4	0.06	0.08	0.51	1.48	2.51	3.66	14.09	Yes	No		22.42 12/03/2014	QUANTUM	Carbon	remedicion

ASYMMETRIC SPINNAKER

<i>Id</i>	<i>SLU</i>	<i>SLE</i>	<i>SL</i>	<i>SHW</i>	<i>SFL</i>	<i>Ratio</i>	<i>Area Meas.Date</i>	<i>Maker</i>	<i>Material</i>	<i>Comment</i>
A2-2	17.26	15.22	16.24	9.60	9.65	99%	130.06 13/12/2019	QUANTUM	Nylon	azul remedicion
A2	16.90	14.82	15.86	8.93	9.00	99%	118.21 06/04/2016	QUANTUM	Nylon	remedición
A3	16.68	14.93	15.81	8.12	9.09	89%	109.50 12/03/2014	QUANTUM	Nylon	remedición