

APH: **537.3** CDL: **9.912**

GPH: **601.8** CertNo:

**BOAT**

Class **Serendipity 43**  
Designer **Doug Peterson**  
Builder **New Orleans Marine**  
Age date **01/1981**  
Series date **01/1981**  
Offset file **counterp.off**  
Data file **PER31414**

**HULL**

Length Overall **12.910 m**  
Maximum Beam **4.048 m**  
Draft **2.347 m**  
Displacement **9,265 kg**  
DLR **7.5699**  
IMS Division **Cruiser/Racer**  
Dynamic Allowance **0.138%**  
Age Allowance **0.487%**

**PROPELLER**

Installation **Shaft exposed**  
Type **Folding 3 blades**  
Diameter **0.420m**

**CREW**

Maximum weight **750 kg**  
Minimum weight **563 kg** \* when applied  
Non Manual Power **No**  
Crew Arm Extension

**SAIL AREAS (m²)**

	Measured	Rated
Mainsail	<b>40.37</b>	<b>41.00</b>
Headsail Luffed	<b>67.42</b>	<b>67.42</b>
Headsail Flying		
Symmetric	<b>141.40</b>	<b>141.40</b>
Asymmetric	<b>147.87</b>	<b>147.87</b>

(1 asymmetric(s) with SHW/SFL < 85%)

**STORM SAIL AREAS (m²)**

Trysail **11.42**  
Storm Jib **15.32**  
Heavy Weather Jib **41.36**

**SAIL LIMITS**

Headsails **6**  
Spinnakers **4** \* Asymmetric may be tacked on the pole

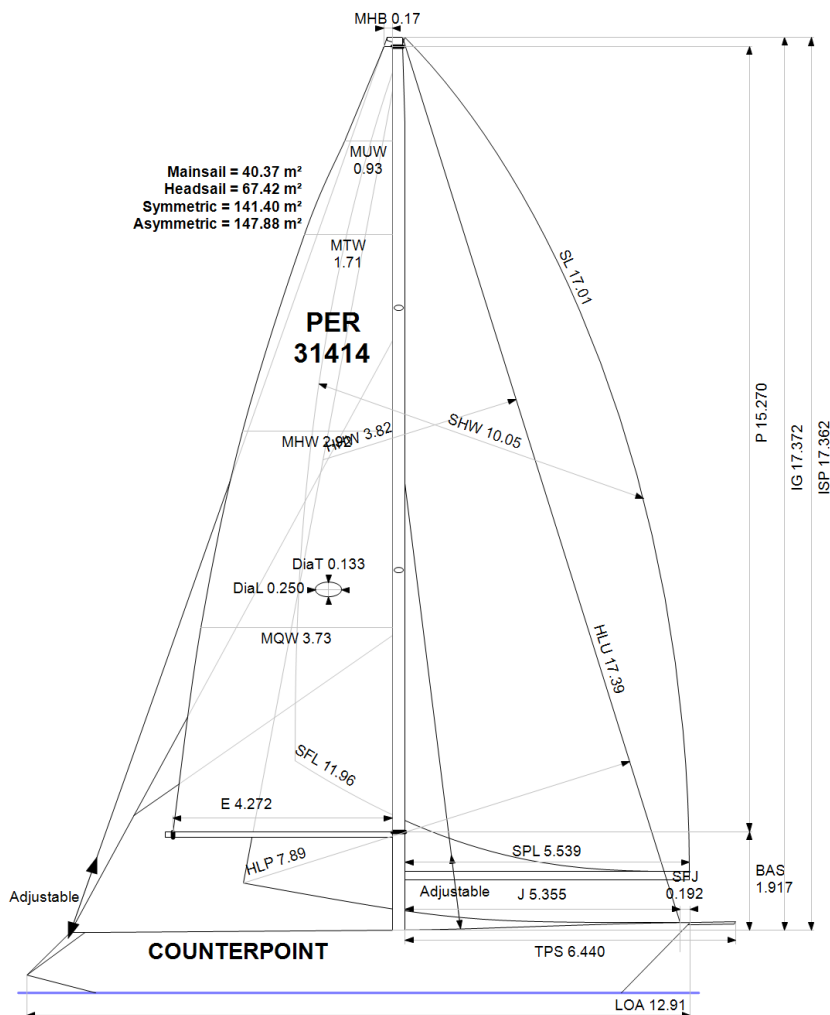
**STABILITY**

Righting Moment **209.2 kg·m**  
Stability Index **123.6**

**COMMENTS**

cambio P, ISP, IG, BAS

The owner and any other person in charge is responsible that boat is complying with her certificate in accordance with RRS 78.1 and ORC Rule 304.



**Rated boat velocities in knots**

Wind Velocity	6 kt	8 kt	10 kt	12 kt	14 kt	16 kt	20 kt
Beat Angles	42.3°	40.8°	40.8°	39.3°	38.2°	38.1°	37.6°
Beat VMG	3.65	4.36	4.93	5.21	5.35	5.43	5.50
52°	5.49	6.50	7.15	7.39	7.50	7.56	7.60
60°	5.76	6.78	7.32	7.56	7.68	7.75	7.81
75°	5.97	6.95	7.44	7.70	7.89	8.03	8.19
90°	5.89	6.91	7.51	7.77	7.98	8.20	8.56
110°	5.80	7.02	7.63	7.98	8.29	8.59	8.98
120°	5.67	6.89	7.56	7.96	8.34	8.70	9.29
135°	5.15	6.34	7.27	7.73	8.11	8.51	9.31
150°	4.37	5.45	6.46	7.26	7.69	8.04	8.79
Run VMG	3.79	4.72	5.60	6.35	6.95	7.45	8.14
Gybe Angles	144.2°	148.4°	147.5°	155.2°	165.8°	177.2°	178.1°



International  
Certificate  
2022

Boat  
**COUNTERPOINT**  
PER 31414

Asociacion de Vela Oceanica  
del Peru - AVOP  
Roberto Peschiera - Rating Officer  
peschiera56@gmail.com



Time Allowances in secs/NM							
Wind Velocity	6 kt	8 kt	10 kt	12 kt	14 kt	16 kt	20 kt
Beat VMG	987.3	825.8	730.4	690.4	672.5	662.4	654.9
52°	656.2	553.4	503.4	486.8	480.1	476.4	473.8
60°	624.7	531.1	491.6	476.3	468.9	464.7	461.0
75°	602.6	517.8	484.0	467.5	456.3	448.2	439.7
90°	610.9	520.9	479.4	463.2	451.0	439.1	420.6
110°	620.6	512.6	472.0	451.4	434.3	419.1	400.9
120°	635.2	522.8	476.1	452.3	431.8	413.7	387.6
135°	698.4	567.5	495.4	465.5	443.9	422.9	386.9
150°	823.4	660.2	557.1	496.2	468.2	448.0	409.5
Run VMG	950.8	762.3	643.3	567.0	518.1	483.0	442.2
Selected Courses							
Windward / Leeward	969.1	794.1	686.9	628.7	595.3	572.7	548.6
All purpose	751.2	622.4	552.6	518.5	498.6	484.2	465.2

Single Number Scoring Options		
Course	Time On Distance	Time On Time
Windward / Leeward	657.6	0.9124
All purpose	537.3	1.1168



Data in meters/kilograms (Metric)

**HULL AND APPENDAGES (Lightship Trim)**

Class	<b>Serendipity 43</b>	LOA	<b>12.910</b>	VCGD	<b>0.014</b>
Measurement	<b>13/06/2017</b>	Max. Beam	<b>4.048</b>	VCGM	<b>-0.022</b>
HIN		Draft	<b>2.347</b>	RM Measured (kg·m)	<b>209.2</b>
Plan review		Displacement	<b>9,265</b>	RM Default (kg·m)	<b>202.1</b>
Hull construction	<b>Solid</b>	Wetted area	<b>34.70</b>	Limit of positive stability(°)	<b>119.4</b>
Aramid Hull Core	<b>No</b>	IMS L	<b>10.468</b>	Stability Index	<b>123.6</b>
Carbon Rudder	<b>No</b>	LSM0	<b>10.696</b>		
Light stanchions	<b>No</b>	Acc. length	<b>12.910</b>		
Trim tab	<b>No</b>	Sink (kg/mm)	<b>23.36</b>		

**PROPELLER**

Propeller Type	<b>Folding 3 blades</b>										
Installation	<b>Shaft exposed</b>	PRD	<b>0.420</b>	PSD	<b>0.025</b>	PSA	<b>18.0°</b>	ST1	<b>0.020</b>	ST4	<b>0.055</b>
Twin screw	<b>No</b>	PBW	<b>0.110</b>	PHD	<b>0.074</b>	ESL	<b>1.060</b>	ST2	<b>0.120</b>	ST5	<b>0.225</b>
Hydro generator	<b>No</b>	PIPA	<b>0.0056</b>	PHL	<b>0.155</b>			ST3	<b>0.120</b>		

**RIG**

Forestay tension	<b>Aft</b>	P	<b>15.270</b>	E	<b>4.272</b>
Inner stay	<b>Adjustable</b>	IG	<b>17.372</b>	J	<b>5.355</b>
Carbon mast	<b>No</b>	ISP	<b>17.362</b>	BAS	<b>1.917</b>
Headsail furler	<b>No</b>	MDT1	<b>0.133</b>	FSD	
Mainsail furler	<b>No</b>	MDL1	<b>0.250</b>	SFJ	<b>0.192</b>
Articulated bowsprit	<b>No</b>	MDT2	<b>0.125</b>	SPL	<b>5.539</b>
Non-circular rigging	<b>No</b>	MDL2	<b>0.200</b>	WPL	
Fiber rigging	<b>No</b>	TL	<b>1.500</b>	TPS	<b>6.440</b>
Runners/Checkstays	<b>2</b>	MW	<b>0.200</b>	BD	<b>0.115</b>
Spreaders	<b>2</b>	GO	<b>0.240</b>	MWT	
				MCG	

**FLOTATION AND STABILITY**

Calculation method	<b>Poles inclining</b>	SFFP	<b>0.875</b>	SAFP	<b>11.790</b>	W1	<b>115.0</b>	PD1	<b>522.2</b>	WD	<b>11.750</b>
Flotation Date	<b>13/06/2017</b>	FFM	<b>1.357</b>	FAM	<b>1.181</b>	W2	<b>115.0</b>	PD2	<b>510.2</b>	PLM	<b>9000.00</b>
Measurer		FF	<b>1.359</b>	FA	<b>1.181</b>	W3	<b>115.0</b>	PD3	<b>504.6</b>	GSA	<b>1.0</b>
Comment		LCFcl	<b>6.977</b>	LCFsh	<b>7.265</b>	W4	<b>115.0</b>	PD4	<b>497.8</b>	RSA	<b>1.0</b>
		SG	<b>1.0253</b>	HBI	<b>1.219</b>						

**INVENTORY**

TANKS	<i>Id</i>	<i>Description</i>	<i>Sp.Wght</i>	<i>Capacity</i>	<i>Condition</i>	<i>LCG</i>	<i>VCG</i>
	B7	AGUA INOX A BABOR		200	0	6.25	
	E7	PETROLEO ALUMINIO A ESTRIBOR	0.9000	200	24	6.25	
				<i>Total deductible</i>	<b>22</b>	<b>6.25</b>	
OTHER ITEMS	<i>Id</i>	<i>Kind</i>	<i>Description</i>		<i>Weight</i>	<i>LCG</i>	<i>VCG</i>
	E5	Battery	LADO ESTRIBOR		21	7.66	
	B7	Battery	LADO BABOR		21	5.61	
	C5	Engine	LISTER PETER 55HP				
					<i>Total deductible</i>	<b>0</b>	



#### MAINSAIL

<i>Id</i>	<i>MHB</i>	<i>MUW</i>	<i>MTW</i>	<i>MHW</i>	<i>MQW</i>	<i>Area</i>	<i>Meas.Date</i>	<i>Maker</i>	<i>Material</i>	<i>Comment</i>
M1-17	0.17	0.93	1.71	2.92	3.73	40.37	11/09/2019	MAURI PRO	Carbon	REMDICION

#### HEADSAIL

<i>Id</i>	<i>HHB</i>	<i>HUW</i>	<i>HTW</i>	<i>HHW</i>	<i>HQW</i>	<i>HLP</i>	<i>HLU</i>	<i>Btn</i>	<i>Flying</i>	<i>FT</i>	<i>Area</i>	<i>Meas.Date</i>	<i>Maker</i>	<i>Material</i>	<i>Comment</i>
GN-1	0.09	0.94	1.88	3.82	5.81	7.89	17.39	No	No		67.42	11/09/2019	MAURI PRO	Carbon	NUEVA
F1	0.10	0.76	1.38	2.50	3.68	4.90	16.90	Yes	No		42.43	25/10/2019	DOYLE	Carbon	USADA ANTES G1
BS1	0.04	0.53	1.08	2.23	3.39	4.43	16.20	No	No		36.10	25/10/2019	DAZY	Dacron	USADA
ST1	0.06	0.47	0.92	1.90	2.89	3.95	10.76	No	No		20.78	25/10/2019	ULMER	Dacron	STAYSAIL

#### SYMMETRIC SPINNAKER

<i>Id</i>	<i>SLU</i>	<i>SLE</i>	<i>SL</i>	<i>SHW</i>	<i>SFL</i>	<i>Area</i>	<i>Meas.Date</i>	<i>Maker</i>	<i>Material</i>	<i>Comment</i>
S1.5	17.23	17.23	17.23	9.98	9.32	141.40	23/05/2003		Unknown	
S1	17.10	17.10	17.10	9.59	9.42	136.17	13/06/2017	MAURI SAILS	Nylon	USADO BCO
S2	17.15	17.15	17.15	9.56	9.25	135.74	13/06/2017	MAURI SALIS	Nylon	USADO BCO

#### ASYMMETRIC SPINNAKER

<i>Id</i>	<i>SLU</i>	<i>SLE</i>	<i>SL</i>	<i>SHW</i>	<i>SFL</i>	<i>Ratio</i>	<i>Area</i>	<i>Meas.Date</i>	<i>Maker</i>	<i>Material</i>	<i>Comment</i>
A2	17.61	16.41	17.01	10.05	11.96	84%	147.87	29/04/2021		Nylon	