

APH: **514.8** CDL: **11.013**

GPH: **578.5** CertNo: **PERI28**

BOAT

Class **Dufour 44**
Designer **Umberto Felci**
Builder **Dufour**
Age date **10/2006**
Series date **04/2002**
Offset file **dufour44.off**
Data file **PER3005 (1)**

HULL

Length Overall **13.350 m**
Maximum Beam **4.250 m**
Draft **2.243 m**
Displacement **10,641 kg**
DLR **5.9869**
IMS Division **Cruiser/Racer**
Dynamic Allowance **0.061%**
Age Allowance **0.487%**

PROPELLER

Installation **Strut**
Type **Folding 2 blades**
Diameter **0.460m**

CREW

Maximum weight **440 kg**
Minimum weight **330 kg** * when applied
Non Manual Power **No**
Crew Arm Extension

SAIL AREAS (m²)

	Measured	Rated
Mainsail	53.60	54.40
Headsail Luffed	63.62	63.62
Headsail Flying		
Symmetric	137.52	137.52
Asymmetric		

STORM SAIL AREAS (m²)

Trysail **16.26**
Storm Jib **15.89**
Heavy Weather Jib **42.89**

SAIL LIMITS

Headsails **6**
Spinnakers **4**

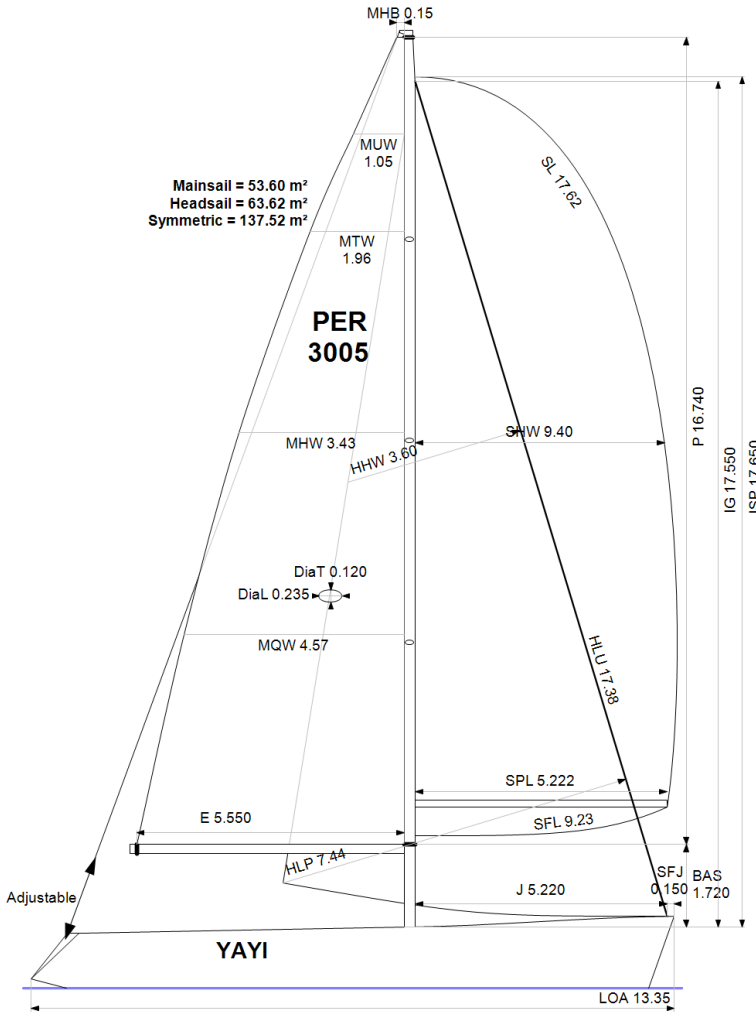
STABILITY

Righting Moment **298.8 kg·m**
Stability Index **116.7**

COMMENTS

cambio de armador ex El Tunante II

The owner and any other person in charge is responsible that boat is complying with her certificate in accordance with RRS 78.1 and ORC Rule 304.



Rated boat velocities in knots

Wind Velocity	6 kt	8 kt	10 kt	12 kt	14 kt	16 kt	20 kt
Beat Angles	43.8°	42.0°	41.7°	40.5°	39.6°	39.3°	38.8°
Beat VMG	3.72	4.51	5.08	5.37	5.52	5.60	5.68
52°	5.70	6.80	7.51	7.80	7.92	7.99	8.05
60°	6.05	7.14	7.76	8.03	8.15	8.21	8.27
75°	6.33	7.38	7.94	8.23	8.43	8.55	8.68
90°	6.28	7.36	7.96	8.30	8.57	8.82	9.19
110°	5.96	7.27	8.04	8.45	8.77	9.00	9.38
120°	5.82	7.11	7.95	8.41	8.83	9.25	9.80
135°	5.26	6.51	7.52	8.12	8.54	8.98	9.97
150°	4.42	5.59	6.64	7.54	8.10	8.50	9.36
Run VMG	3.83	4.84	5.75	6.57	7.24	7.81	8.61
Gybe Angles	141.2°	148.4°	150.2°	154.1°	161.3°	174.8°	178.1°



Time Allowances in secs/NM							
Wind Velocity	6 kt	8 kt	10 kt	12 kt	14 kt	16 kt	20 kt
Beat VMG	968.7	798.0	709.2	670.3	652.4	642.9	633.6
52°	631.1	529.1	479.2	461.6	454.4	450.8	447.3
60°	595.1	504.1	464.0	448.3	441.9	438.3	435.4
75°	568.7	487.7	453.7	437.4	427.2	421.2	415.0
90°	573.6	489.3	452.2	433.7	419.9	408.1	391.8
110°	604.0	495.4	447.9	426.0	410.3	400.2	384.0
120°	619.1	506.5	453.0	428.0	407.8	389.2	367.2
135°	685.0	553.0	479.0	443.4	421.7	400.8	361.0
150°	814.6	644.0	542.2	477.4	444.4	423.6	384.5
Run VMG	940.6	743.6	626.0	547.6	497.4	460.9	417.9
Selected Courses							
Windward / Leeward	954.6	770.8	667.6	609.0	574.9	551.9	525.7
All purpose	731.6	599.9	531.1	495.8	475.1	461.1	441.9

Single Number Scoring Options		
Course	Time On Distance	Time On Time
Windward / Leeward	637.5	0.9412
All purpose	514.8	1.1656



Data in meters/kilograms (Metric)

HULL AND APPENDAGES (Lightship Trim)

Class	Dufour 44	LOA	13.350	VCGD	0.165
Measurement	20/09/2017	Max. Beam	4.250	VCGM	0.132
HIN		Draft	2.243	RM Measured (kg·m)	298.8
Plan review		Displacement	10,641	RM Default (kg·m)	288.7
Hull construction	Solid	Wetted area	38.08	Limit of positive stability(°)	111.7
Aramid Hull Core	No	IMS L	12.101	Stability Index	116.7
Carbon Rudder	No	LSM0	12.112		
Light stanchions	No	Acc. length	13.350		
Trim tab	No	Sink (kg/mm)	29.78		

PROPELLER

Propeller Type	Folding 2 blades						
Installation	Strut	PRD	0.460	EDL	3.150	ST3	0.180
Twin screw	No	PBW	0.120	ST1	0.063	ST4	0.108
Hydro generator	No	PIPA	0.0040	ST2	0.180	ST5	0.310

RIG

Forestay tension	Aft	P	16.740	E	5.550
Inner stay	None Fitted	IG	17.550	J	5.220
Carbon mast	No	ISP	17.650	BAS	1.720
Headsail furler	No	MDT1	0.120	FSD	0.040
Mainsail furler	No	MDL1	0.235	SFJ	0.150
Articulated bowsprit	No	MDT2	0.120	SPL	5.222
Non-circular rigging	No	MDL2	0.180	WPL	
Fiber rigging	No	TL	1.000	TPS	
Runners/Checkstays	0	MW	0.180	BD	0.190
Spreaders	3	GO	0.260	MWT	
				MCG	5.860

FLOTATION AND STABILITY

Calculation method	Poles inclining	SFFP	0.502	SAFP	12.352	W1	137.0	PD1	469.3	WD	12.700
Flotation Date	20/09/2017	FFM	1.490	FAM	1.116	W2	137.0	PD2	456.9	PLM	9000.00
Measurer		FF	1.480	FA	1.137	W3	137.0	PD3	453.8	GSA	1000.0
Comment		LCFcl	7.453	LCFsh	7.740	W4	137.0	PD4	454.3	RSA	1000.0
		SG	1.0253	HBI	1.261						

INVENTORY

TANKS	<i>Id</i>	<i>Description</i>	<i>Sp.Wght</i>	<i>Capacity</i>	<i>Condition</i>	<i>LCG</i>	<i>VCG</i>
	E4-1	PETROLEO PVC	0.9000	250	250	10.47	
	B3-1	AGUA PVC		250	0	11.22	
	C1-1	AGUA PVC		170	0	2.02	
				<i>Total deductible</i>	225	10.47	
OTHER ITEMS	<i>Id</i>	<i>Kind</i>	<i>Description</i>		<i>Weight</i>	<i>LCG</i>	<i>VCG</i>
	B2-1	Miscellaneous	02 BALON DE GAS		5	10.44	
	C3-2	Battery	01 BATERIA GRANDE		24	10.44	
	C3-1	Battery	01 BATERIA GRANDE		24	10.35	
	B4	Battery	01 BATERIA MEDIANA		16	10.04	
	C4-1	Engine	VOLVO PENTA 55HP				
	ORC	Anchor	*Legacy Anchor*		40	0.00	
					<i>Total deductible</i>	10	0.00



MAINSAIL

<i>Id</i>	<i>MHB</i>	<i>MUW</i>	<i>MTW</i>	<i>MHW</i>	<i>MQW</i>	<i>Area</i>	<i>Meas.Date</i>	<i>Maker</i>	<i>Material</i>	<i>Comment</i>
M1-18	0.15	1.05	1.96	3.43	4.57	53.60	18/10/2018	QUANTUM	Carbon	NUEVA

HEADSAIL

<i>Id</i>	<i>HHB</i>	<i>HUW</i>	<i>HTW</i>	<i>HHW</i>	<i>HQW</i>	<i>HLP</i>	<i>HLU</i>	<i>Btn</i>	<i>Flying</i>	<i>FT</i>	<i>Area</i>	<i>Meas.Date</i>	<i>Maker</i>	<i>Material</i>	<i>Comment</i>
C2	0.09	0.91	1.77	3.60	5.49	7.44	17.38	No	No		63.62	26/09/2017	QUANTUM	Kevlar	REMEDIACION
R1	0.09	0.88	1.72	3.52	5.48	7.53	17.45	No	No		63.57	26/09/2017	QUANTUM	Kevlar	REMEDIACION
C1	0.10	0.89	1.77	3.60	5.51	7.47	17.32	No	No		63.53	26/09/2017	QUANTUM	Kevlar	REMEDIACION
C4	0.08	0.67	1.32	2.65	4.00	5.35	17.51	Yes	No		46.72	26/09/2017	QUANTUM	Dacron	REMEDIACION

SYMMETRIC SPINNAKER

<i>Id</i>	<i>SLU</i>	<i>SLE</i>	<i>SL</i>	<i>SHW</i>	<i>SFL</i>	<i>Area</i>	<i>Meas.Date</i>	<i>Maker</i>	<i>Material</i>	<i>Comment</i>
S1	17.62	17.62	17.62	9.40	9.23	137.52	26/09/2017	QUANTUM	Polyester	ROJO/USADO
S2	17.60	17.60	17.60	9.25	9.18	135.46	26/09/2017	QUANTUM	Polyester	RJO/BCO USADO